

# **SUDAAN Installation Guide**

## **PC**

### **Release 10.0**

Copyright 2008 by

RTI International  
P.O. Box 12194  
Research Triangle Park, NC 27709

All rights reserved. No part of this publication may be reproduced or transmitted by any means without permission from the publisher.

All brand names and product names used in this book are trademarks, registered trademarks, or trade names of their respective holders. The following terms are trademarks or registered trademarks of other organizations: Adobe is a registered trademark and Acrobat Reader is a trademark of Adobe Systems Incorporated. Linux is a registered trademark of Linus Torvalds, the original author of the Linux Kernel. MS-DOS, Microsoft, Windows, NT, and XP are registered trademarks of Microsoft Corporation. Solaris is a trademark of Sun Microsystems. SAS is a registered trademark of the SAS Institute, Inc. SPSS is a registered trademark of SPSS, Inc.



# TABLE OF CONTENTS

1.	Overview .....	5
1.1	Technical Support .....	5
1.2	Previous Releases of SUDAAN .....	5
1.3	Software Installation .....	6
1.4	SUDAAN Help .....	9
1.5	SUDAAN Manual .....	9
1.6	Procedure to Renew a SUDAAN License .....	9
2.	Installation Instructions for DOS Standalone, Individual User Version .....	13
2.1	System Requirements .....	13
2.2	Software Installation .....	13
2.3	Running SUDAAN .....	14
3.	Installation Instructions for WINDOWS Standalone Individual User Version .....	15
3.1	System Requirements .....	15
3.2	Software Installation .....	15
3.3	Running SUDAAN .....	16
4.	Installation Instructions for WINDOWS Standalone Network .....	17
4.1	System Requirements .....	17
4.2	Software Installation–LAN Administrator .....	17
4.3	Software Installation–LAN User .....	18
4.4	Running SUDAAN .....	18
5.	SUDAAN Windows Users Guide .....	19
5.1	Using Interactive SUDAAN .....	19
5.1.1	Main Menu .....	19
5.1.2	File Menu Option .....	19
5.1.3	Edit Menu Option .....	20
5.1.4	Option Menu Option .....	20
5.1.5	Execute Command .....	21
5.1.6	Window Menu Option .....	22
5.1.7	Help Menu Option .....	22
5.1.8	The Right Mouse Button Options .....	23
5.2	How to Execute SUDAAN in Batch Mode .....	23
6.	Installation Instructions For SAS-Callable Individual User Version .....	25
6.1	System Requirements .....	25
6.2	Software Installation .....	25
6.3	Running SUDAAN .....	26
7.	Installation Instructions For SAS-Callable Network .....	27
7.1	System Requirements .....	27
7.2	Software Installation–LAN Administrator .....	27
7.3	Software Installation–LAN User .....	29
7.4	Running SUDAAN .....	29



# 1. OVERVIEW

SUDAAN is a single program consisting of a family of procedures used to analyze data from complex surveys and other observational and experimental studies involving cluster-correlated data. A complete description of the capabilities of SUDAAN can be found at <http://www.rti.org/sudaan>.

The following document provides instructions on how to install and run SUDAAN. The most current version of these installation instructions can be obtained by visiting the SUDAAN website at <http://www.rti.org/sudaan> and selecting the *Downloads* tab.

## 1.1 Technical Support

RTI International (Research Triangle Institute) provides limited technical support for SUDAAN problems free of charge. The [SUDAAN Language Manual](#) provides detailed information on programming with SUDAAN and the [SUDAAN Example Manual](#) provides numerous examples. Both of these manuals can be installed during the SUDAAN setup (as PDF files). Hardcopy versions of these manuals can also be purchased from the SUDAAN website at <http://www.rti.org/sudaan>. You may also review bug reports, get answers to frequently asked questions and obtain other technical assistance through our website.

For additional technical support please submit a support request available from our website or send an email to [sudaan@rti.org](mailto:sudaan@rti.org).

You may also contact the RTI SUDAAN offices at:

RTI International  
SUDAAN Coordinator  
3040 Cornwallis Road  
Research Triangle Park, NC 27709-2194

Voice Mail: (919) 541-6602  
FAX: (919) 541-7431  
Email: [sudaan@rti.org](mailto:sudaan@rti.org)

Due to the high volume of telephone calls we receive, you may be automatically sent to the SUDAAN voice mail when you call the SUDAAN office. Please leave your name, telephone number and a brief description of the reason for your call. One of our SUDAAN administrators will contact you as soon as possible.

SUDAAN is supplied on a CD-ROM. This media contains all versions of SUDAAN compiled and tested for DOS and Windows. **Note: If you have licensed more than one version of SUDAAN you may install all licensed versions during one call to the SETUP . EXE.**

## 1.2 Previous Releases of SUDAAN

We recommend that if you are installing *SUDAAN Release 10* for the first time, and you have an existing license to *SUDAAN Release 9*, that you remove *SUDAAN Release 9* from your computer before proceeding with the SUDAAN 10 installation. This will avoid any conflicts that may arise when trying to

access SUDAAN. To remove *SUDAAN Release 9* from your system, you can:

1. Insert the *SUDAAN Release 9* CD, run the **SETUP.EXE** program and follow the instructions to remove SUDAAN from your computer.
2. Select **Add or Remove Programs** from the Windows Control Panel.

If you have a current license to a network version of SUDAAN (Standalone or SAS-Callable), we recommend both the administrator and each user remove *SUDAAN Release 9* from their systems before proceeding with the SUDAAN 10 installation.

**Note:** If you are renewing an annual license to SUDAAN 10, and SUDAAN 10 already exists on your computer, then do not remove SUDAAN 10 before proceeding with the renewal process. **Section 1.6** provides information on renewing annual SUDAAN licenses.

### 1.3 Software Installation

To install *SUDAAN Release 10*, insert the SUDAAN 10 CD into your CD-ROM drive and execute the program **SETUP.EXE** in the root directory on this disk. You can do this by entering:

```
D:\setup
```

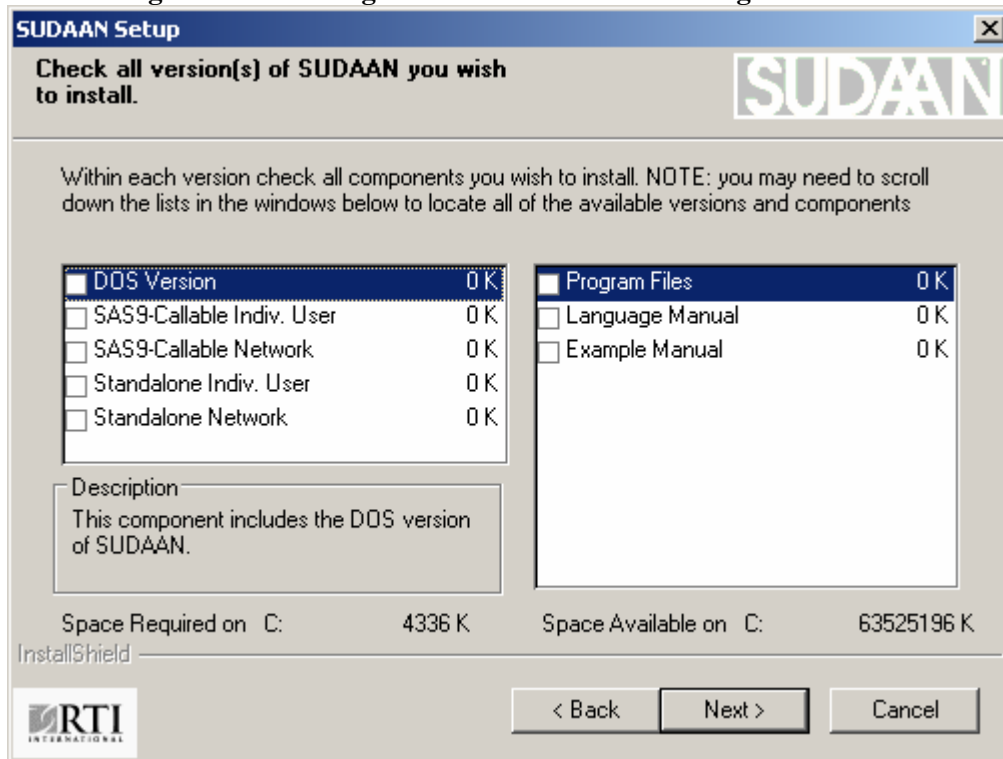
From the **Run...** command on the Windows **Start** menu. Here we assume that D: is the drive letter associated with your CD-ROM reader. You can also execute **SETUP.EXE** by locating it in the Windows Explorer. Double-click on the **SETUP.EXE** program icon to start the installation.

The **SETUP.EXE** program will lead you through the installation process, during which you will do the following:

1. Supply your name and company as they should appear in the SUDAAN banner.
2. Read and accept the SUDAAN license agreement.
3. Accept the default target directory C:\Program Files\SUDAAN\Release10 (*recommended*) or specify a different directory where SUDAAN should be installed.

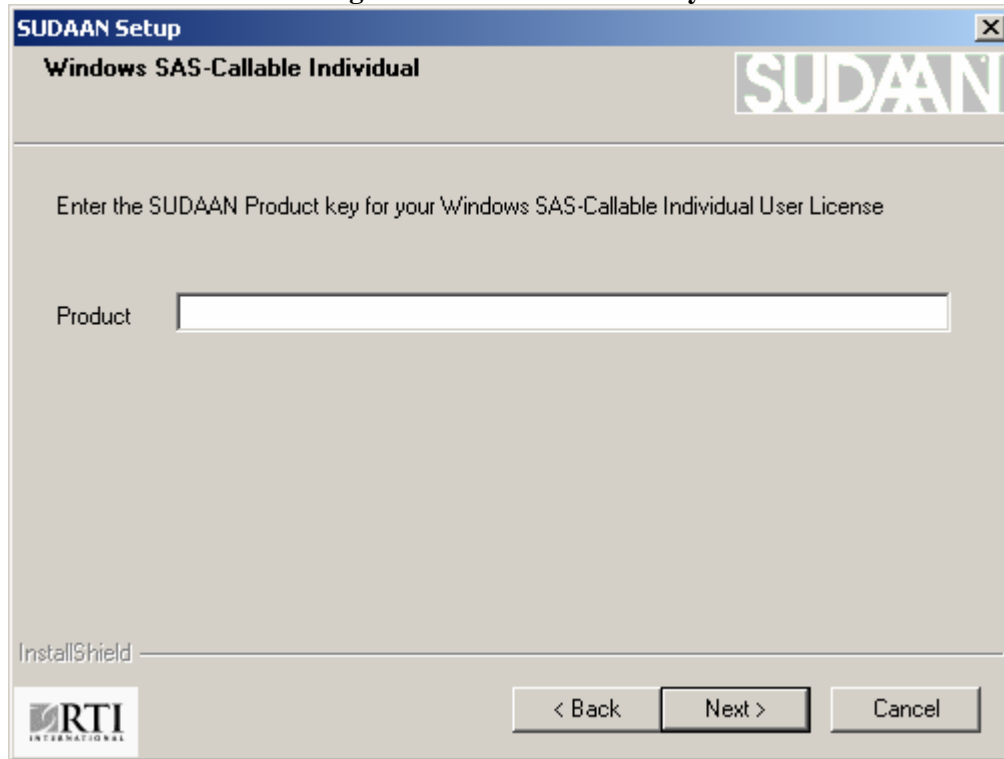
4. As illustrated in **Figure 1.1**, you will be asked to check all versions of SUDAAN that you wish to install. Refer to subsequent sections of this Installation Guide for detailed instructions on installing each version. Note that if you have purchased more than one license to SUDAAN (e.g. Standalone and SAS9-Callable Indiv. User), then all versions can be installed simultaneously by checking the corresponding boxes on this screen.

**Figure 1.1 Selecting Versions of SUDAAN During Installation**



5. You will be asked to enter your 22-digit product key as illustrated in **Figure 1.2**. A product key has been sent to you for each SUDAAN product you purchased. The product keys are included in the letter correspondence that accompanied the SUDAAN **SETUP** disk.

**Figure 1.2 Enter Product Key**

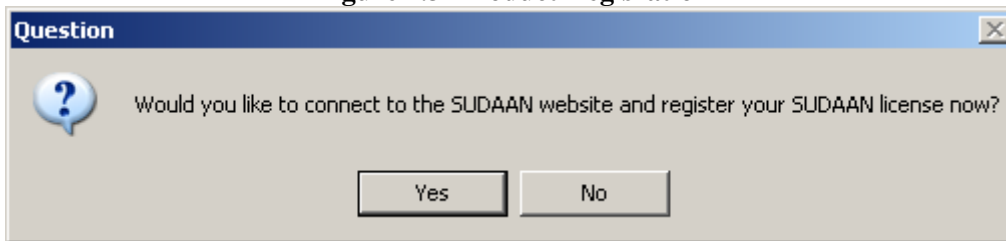


**IMPORTANT:** Be sure to save all product keys. You will need them again whenever you have to reinstall the software, for example on a new computer.

6. After you enter the SUDAAN product key for each SUDAAN product you purchased, SUDAAN will install all the necessary files in the directory you specified in Step #3.
7. After a few more screens that are specific to the type of SUDAAN product you purchased (these are discussed in subsequent sections of this manual), you will see a message box as indicated in **Figure 1.3**. Although not required, we encourage all SUDAAN users to register their SUDAAN products. At the SUDAAN product registration screen located at the SUDAAN website, you will be asked if you would like to receive any email correspondence regarding new releases, training and other significant SUDAAN-related news. By checking this box, you will also automatically receive any news regarding SUDAAN-related bugs and appropriate work-arounds that have been identified by our staff. Please note that we treat your email address as confidential information and we will not share this information with anyone outside the immediate SUDAAN team.



**Figure 1.3 Product Registration**



## 1.4 SUDAAN Help

SUDAAN's Interactive Help system is easily accessible from within SUDAAN by selecting **Help** from the Main Menu in Standalone versions of SUDAAN, or by selecting **Help** from the Main Menu from the SAS Windows interface in SAS-callable versions of SUDAAN. SUDAAN's Interactive Help can also be accessed from the SUDAAN folder on the **Start Programs** menu in Windows.

The SUDAAN Interactive Help is also available at SUDAAN's website: <http://www.rti.org/sudaan>. Click on Technical Assistance, then On-line Help.

## 1.5 SUDAAN Manual

The [SUDAAN Language Manual](#) and [SUDAAN Example Manual](#) will be installed by default in the Manual subdirectory of SUDAAN\Release10 and shortcuts to these documents will be located in the SUDAAN folder on the **Start Programs** menu in Windows. These manuals are in PDF format. Use Adobe Acrobat Reader, which is available free from Adobe's website to view these documents. You can find additional SUDAAN examples on our website.

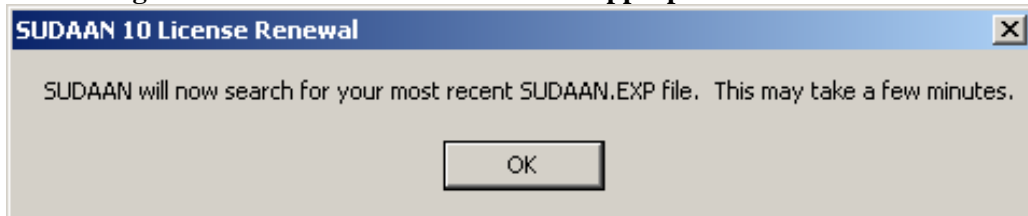
## 1.6 Procedure to Renew a SUDAAN License

Unless you have obtained a permanent license to this release of SUDAAN, you will need to renew your SUDAAN license in order to continue using the software after the expiration date. Once you have purchased the renewal, you will receive a new 22-digit Product Key for each version of SUDAAN that you have an annual license to. To update your software, do the following for each version of SUDAAN you are renewing:

1. **IMPORTANT:** The SUDAAN renewal software requires that .NET Framework Version 2.0 or higher from Microsoft be installed on your machine. This can be installed, free-of-charge, from [www.microsoft.com/downloads](http://www.microsoft.com/downloads). Most machines will have this installed already. We recommend attempting to renew your software first. If you receive an error message that references the .NET Framework, then download the necessary files from Microsoft.
2. For Windows XP or 2000, make sure that you are logged into your computer with administrator privileges.
3. Click on the **Renew SUDAAN** item in the SUDAAN folder on the **Start Programs** menu in Windows.

4. Enter your name and company as they should appear in the SUDAAN banner, and your new 22-digit product key.
5. The renewal software will attempt to find the most current version of your SUDAAN.EXP file that is consistent with the 22-digit product key you entered in the previous step. Hit “OK” at the message box displayed in Figure 1.4.

**Figure 1.4 SUDAAN Will Search For Appropriate SUDAAN.EXP**



6. The renewal software will ask you to select your SUDAAN.EXP file. By default, this will be located under

**Directory Location of SUDAAN.EXP**

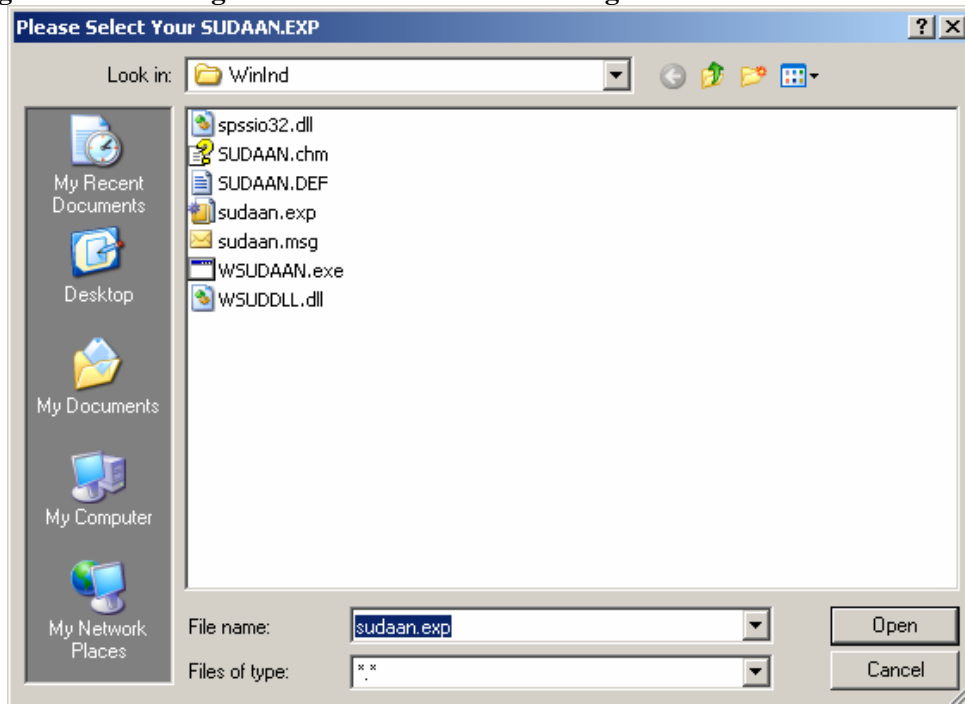
Program Files\SUDAAN\Release10\DOS  
 Program Files\SUDAAN\Release10\WinInd  
 Program Files\SUDAAN\Release10\WinNet  
 Program Files\SUDAAN\Release10\SAS9Ind  
 Program Files\SUDAAN\Release10\SAS9Net

**SUDAAN Version**

For DOS Version  
 For Standalone Individual User Version  
 For Standalone LAN User Version  
 For SAS9 Callable Individual User Version  
 For SAS9 Callable LAN User Version

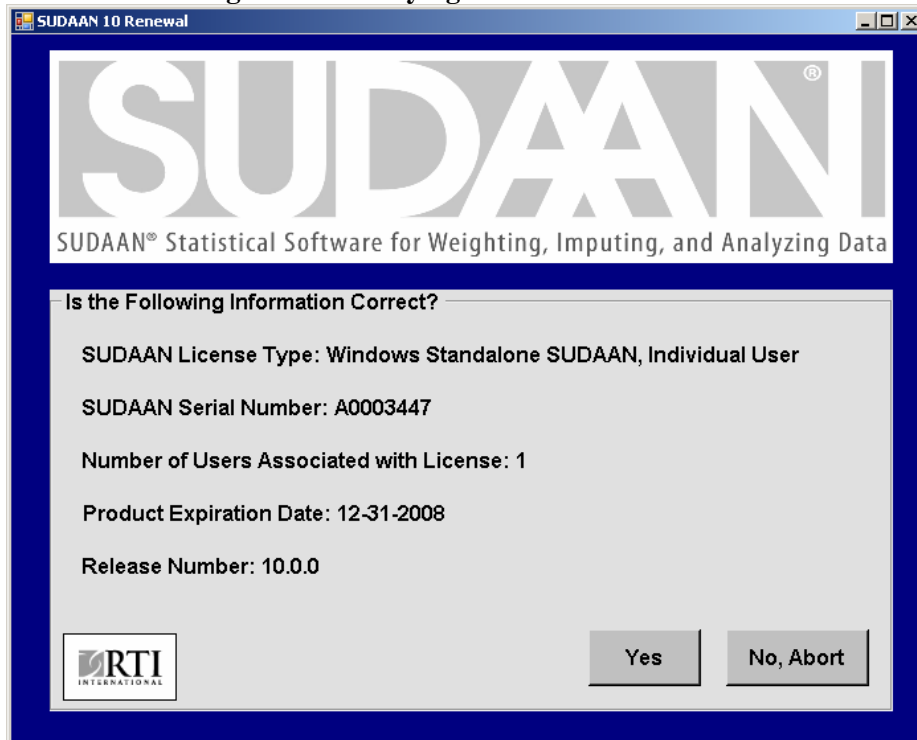
**Figure 1.5** illustrates the box that will appear when the renewal software asks for the SUDAAN.EXP file. After you have identified the correct file, simply select the file and hit the “Open” button

**Figure 1.5 Selecting the SUDAAN.EXP File During the SUDAAN Renewal Process**



7. The software will ask you to verify the information about your license in the screen depicted in **Figure 1.6**. If this information is correct, hit the “Yes” button.

**Figure 1.6 Verifying Renewal Information**



At this point your software is updated, and you can continue to use it.



## 2. INSTALLATION INSTRUCTIONS FOR DOS STANDALONE, INDIVIDUAL USER VERSION

### 2.1 System Requirements

<u>Category</u>	<u>Requirement</u>
Resources	8 MB of RAM (16 MB RAM suggested), 40 MB of hard disk
Operating System	Microsoft Windows 2000 or Windows XP

### 2.2 Software Installation

During the installation process, select **DOS** by clicking the appropriate check box to the left of this item in the left pane of the setup window when you reach the screen displayed in **Figure 1.1**.

By default, the following components will be installed. However you can deselect any of these components by clicking on the check boxes to the left of the component names which are displayed in the right pane of the setup window.

<u>Component</u>	<u>Description</u>
Program Files	Files required to execute SUDAAN procedures
Language Manual	SUDAAN Language Manual in Adobe Acrobat PDF format
Example Manual	SUDAAN Example Manual in Adobe Acrobat PDF format

Following installation, the following subdirectories and files should be present (by default under C:\Program Files, or in the installation directory you have specified during setup)

- **SUDAAN\Release10**  
This subdirectory will contain SUDAAN's license renewal software and README.1ST files.
- **SUDAAN\Release10\DOS**  
This subdirectory will contain all program and other required files.
- **SUDAAN\Release10\Help**  
This subdirectory will always be present, and contains the CHM Help. Note that **SETUP** will create a shortcut to it in the SUDAAN folder on the **Start Programs** Menu.
- **SUDAAN\Release10\Manual**  
This subdirectory will be present if you specify installation of the SUDAAN Language Manual, and/or the SUDAAN Example Manual. Note that **SETUP** will create shortcuts to these documents in the SUDAAN folder on the **Start Programs** Menu.

The **SETUP** program will install a SUDAAN folder on the **Start Programs** menu with shortcuts to the SUDAAN website, SUDAAN Language and Example Manuals, SUDAAN Help, and the SUDAAN

Renewal program.

## 2.3 Running SUDAAN

After installation, you will need to add your new SUDAAN directory, by default

`<path>\SUDAAN\Release10\DOS,`

to your directory PATH. `<path>` is the complete path specification for the SUDAAN programs, which by default is “C:\Program Files”. Remove any old SUDAAN directory from the PATH. If you make these changes in your system settings, they will be available each time you boot your system.

The syntax for executing SUDAAN (from the DOS Command prompt, or from the RUN command) is:

```
SUDPROC infile [outfile] [-r | -a]
```

Where *infile* is the name of the file containing SUDAAN procedure statements, *outfile* is the name of the file to which SUDAAN should direct outputs, and *r* and *a* are write options.

IF *outfile* already exists...

- r causes the file to be overwritten, and
- a causes the output to be appended to the existing file

IF you omit *outfile*...

SUDAAN directs all output to the screen.

See the [SUDAAN Language Manual](#) and the [SUDAAN Example Manual](#) for complete information on using the SUDAAN procedures.

### 3. INSTALLATION INSTRUCTIONS FOR WINDOWS STANDALONE INDIVIDUAL USER VERSION

#### 3.1 System Requirements

<u>Category</u>	<u>Requirement</u>
Resources	8 MB of RAM (16 MB RAM suggested), 40 MB of hard disk
Operating System	Microsoft Windows 2000 or Windows XP

#### 3.2 Software Installation

During the installation process, select **Standalone Indiv. User** by clicking the appropriate check box to the left of this item in the left pane of the setup window when you reach the screen displayed in **Figure 1.1**.

By default, the following components will be installed. However you can deselect any of these components by clicking on the check boxes to the left of the component names which are displayed in the right pane of the setup window.

<u>Component</u>	<u>Description</u>
Program Files	Files required to execute SUDAAN procedures
HTML Help	This is the HTML Help version of the Interactive SUDAAN Help system
CHM Help	This is the CHM (Compiled) Help version of the Interactive SUDAAN Help system. Note that the screens and material in the HTML and CHM Help are identical. This component must be installed if you wish to access SUDAAN's Interactive Help from within the SUDAAN Standalone interface.
Language Manual	SUDAAN Language Manual in Adobe Acrobat PDF format
Example Manual	SUDAAN Example Manual in Adobe Acrobat PDF format

- **SUDAAN\Release10**  
This subdirectory will contain SUDAAN's license renewal software and README.1ST files.
- **SUDAAN\Release10\WinInd**  
This subdirectory will contain all program and other required files.
- **SUDAAN\Release10\Help**  
This subdirectory will always be present, and contains the HTML and/or CHM Help. Note that **SETUP** will create a shortcut to these in the SUDAAN folder on the **Start Programs** Menu.
- **SUDAAN\Release10\Manual**  
This subdirectory will be present if you specify installation of the SUDAAN Language Manual, and/or the SUDAAN Example Manual. Note that **SETUP** will create shortcuts to these documents in the SUDAAN folder on the **Start Programs** Menu.

The **SETUP** program will install a SUDAAN folder on the **Start Programs** menu with shortcuts to the SUDAAN program, the SUDAAN website, SUDAAN Language and Example Manuals, SUDAAN Help, and the SUDAAN Renewal program.

### **3.3 Running SUDAAN**

Please refer to **Chapter 5** of this manual for complete details on how to run Windows Standalone SUDAAN.



## 4. INSTALLATION INSTRUCTIONS FOR WINDOWS STANDALONE NETWORK

All LAN versions of SUDAAN should be installed using a two-step process:

1. Install the Administrator version of SUDAAN from the CD as described in **Section 4.2**.
2. Each user wishing to use SUDAAN on the LAN must complete the LAN User Version installation as described in **Section 4.3**. All files needed for the LAN User Version installation will be installed during the LAN Administrator Version installation.

**IMPORTANT:** As indicated in the SUDAAN license agreement, the maximum number of simultaneous users who access SUDAAN on the network should not exceed the total number of users associated with your SUDAAN LAN license.

### 4.1 System Requirements

<u>Category</u>	<u>Requirement</u>
Resources	8 MB of RAM (16 MB RAM suggested), 40 MB of hard disk
Operating System	Microsoft Windows 2000 or Windows XP

### 4.2 Software Installation—LAN Administrator

During the installation process, select **Standalone Network** by clicking the appropriate check box to the left of this item in the left pane of the setup window when you reach the screen displayed in **Figure 1.1**.

By default, the following components will be installed. However you can deselect any of these components by clicking on the check boxes to the left of the component names which are displayed in the right pane of the setup window.

<u>Component</u>	<u>Description</u>
Program Files	Files required to execute SUDAAN procedures
NetUser Setup Files	<b>SETUP.EXE</b> and other files for network user install (See <b>Section 4.3</b> )
HTML Help	This is the HTML Help version of the Interactive SUDAAN Help system
CHM Help	This is the CHM (Compiled) Help version of the Interactive SUDAAN Help system. Note that the screens and material in the HTML and CHM Help are identical. This component must be installed if you wish to access SUDAAN's Interactive Help from within the SUDAAN Standalone interface.
Language Manual	SUDAAN Language Manual in Adobe Acrobat PDF format
Example Manual	SUDAAN Example Manual in Adobe Acrobat PDF format

Following installation, the following subdirectories and files should be present (by default under C:\Program Files, or in the installation directory you have specified during setup)

- **SUDAAN\Release10**  
This subdirectory will contain SUDAAN's license renewal software and README.1ST files.
- **SUDAAN\Release10\WinNet**  
This subdirectory will contain all program and other required files.
- **SUDAAN\Release10\WinNet\NetUser**  
This subdirectory will contain **SETUP.EXE** and other files required for the network user install
- **SUDAAN\Release10\Help**  
This subdirectory will always be present, and contains the HTML and/or CHM Help. Note that **SETUP** will create a shortcut to these in the SUDAAN folder on the **Start Programs** Menu.
- **SUDAAN\Release10\Manual**  
This subdirectory will be present if you specify installation of the SUDAAN Language Manual, and/or the SUDAAN Example Manual. Note that **SETUP** will create shortcuts to these documents in the SUDAAN folder on the **Start Programs** Menu.

The **SETUP** program will install a SUDAAN folder on the **Start Programs** menu with shortcuts to the SUDAAN program, the SUDAAN website, SUDAAN Language and Example Manuals, SUDAAN Help, and the SUDAAN Renewal program.

### 4.3 Software Installation–LAN User

The **SETUP.EXE** program in the NetUser subdirectory of the SUDAAN\Release10\WinNet network directory is a program that will automatically set up SUDAAN for each user. This program should be run by each user. After **SETUP** has run, verify that **SETUP** has created a SUDAAN folder in the **Start Programs** menu. In the folder one should find shortcuts to the SUDAAN program, the SUDAAN website, SUDAAN Language and Example Manuals and the SUDAAN Help.

### 4.4 Running SUDAAN

Please refer to **Chapter 5** of this manual for complete details on how to run Windows Standalone SUDAAN.

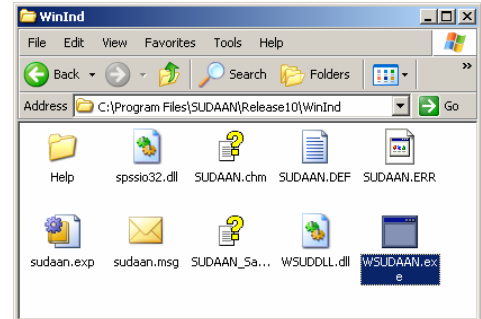
## 5. SUDAAN WINDOWS USERS GUIDE

This chapter will introduce you to the special features of the **Standalone Windows Version** of SUDAAN (Individual or LAN version). You can execute this version in either interactive or batch mode. **Section 5.1** describes the SUDAAN interface available to you when you run in interactive mode. **Section 5.2** describes how to use SUDAAN in batch mode.

### 5.1 Using Interactive SUDAAN

To launch an interactive session of SUDAAN for Windows, click on the **Start** button on your Windows Desktop (generally in the lower left corner), choose **Programs** or **All Programs**, and then click on the SUDAAN icon. You may also locate the SUDAAN executable, WSUDAAN.EXE in the Windows Explorer and double click on the icon to execute SUDAAN as shown in **Figure 5.1**.

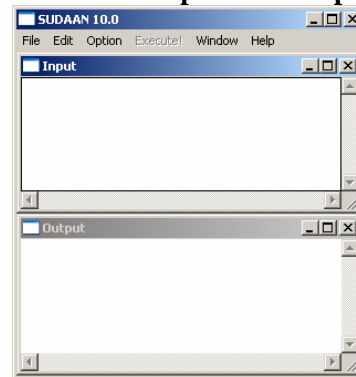
**Figure 5.1: SUDAAN for Windows Icon**



#### 5.1.1 Main Menu

SUDAAN's interface (**Figure 5.2**) displays two windows: the *Input window* and the *Output window*. The Input window is a text editor in which you can create or edit SUDAAN programs; the Output window is a read-only viewer used to display the results from SUDAAN runs. You can switch from the Input window to the Output window by simply clicking in the Output window area, and vice versa.

**Figure 5.2: SUDAAN Input and Output Windows**



The SUDAAN interface has a single main menu bar at the top of the screen for both Input and Output windows as shown in **Figure 5.2**. From this menu, you can edit and save your SUDAAN programs, execute, display and save SUDAAN results, access font selection and data directories options, and get online help resources. These options are discussed in the next several sections.

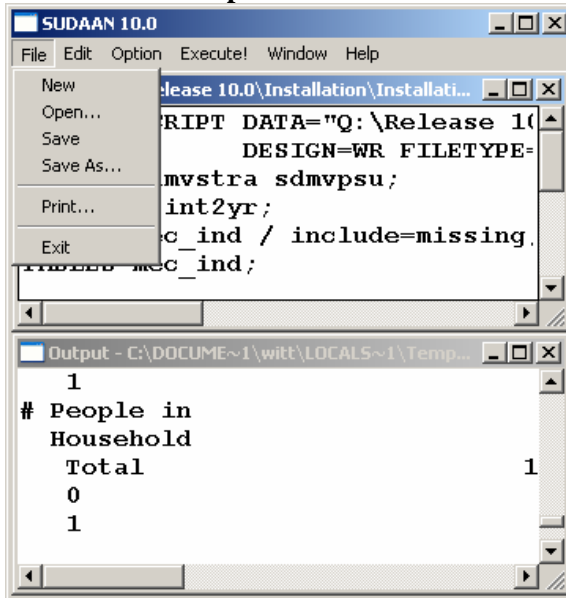
#### 5.1.2 File Menu Option

From the Input window, you can open an existing SUDAAN program by selecting **Open** from the **File** menu, or you can select **New** to create a new program from scratch. Note that the capacity of the Input window is 2GB under Windows 2000 and XP.

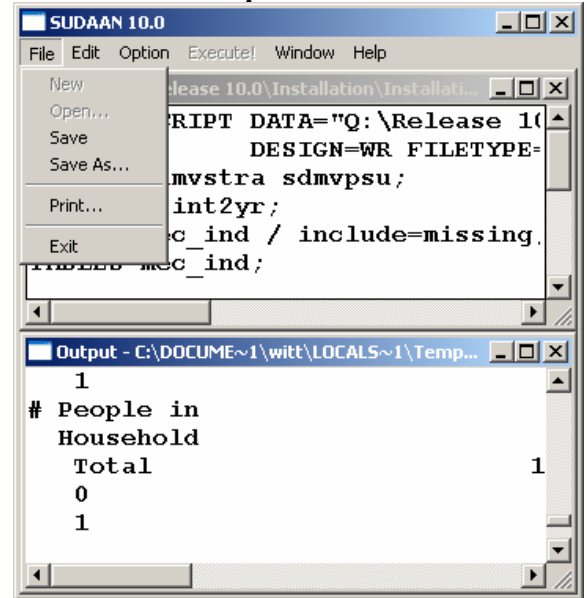
From either window you can choose **Save** or **Save as** to save the contents of the window and you can choose **Print** to print the contents of the window.

Figure 5.3 and Figure 5.4 illustrate the **Open** and **Save** screens in SUDAAN.

**Figure 5.3: File Popup Menu for Input Window**



**Figure 5.4: File Popup Menu for Output Window**



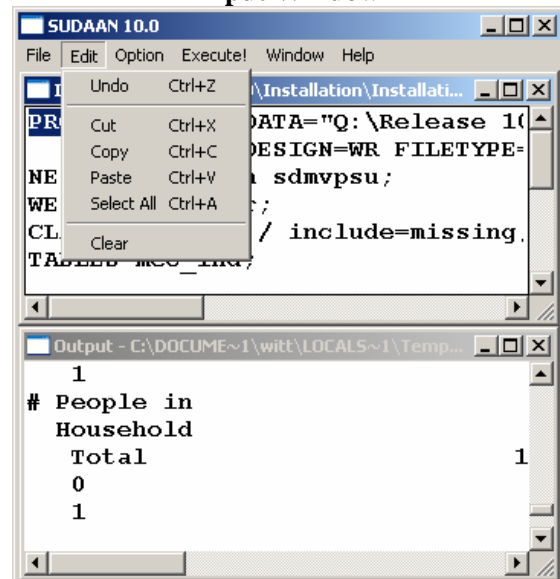
### 5.1.3 Edit Menu Option

The **Edit** option from the menu bar provides the standard **Undo**, **Cut**, **Copy**, **Paste** and **Select All** functions for the Input window. You can select these functions using either the mouse or the key accelerators. Selecting **Clear** from the **Edit** menu will clear everything in the Input window; anything unsaved will be lost.

The only available selection in the **Edit** Menu for the Output window is **Clear**, since it is a read-only viewer. You can save the output to a file and then edit it using another editor, for example, *NotePad*.

**Figure 5.5** illustrates the **Edit** screen in SUDAAN associated with the Input window.

**Figure 5.5: Edit Popup Menu from Input Window**



### 5.1.4 Option Menu Option

Selecting **Option** from the menu bar will allow you to change the default directory and change the font for both viewing and printing. This is depicted in **Figure 5.6**.

Figure 5.6: Option Popup Menu

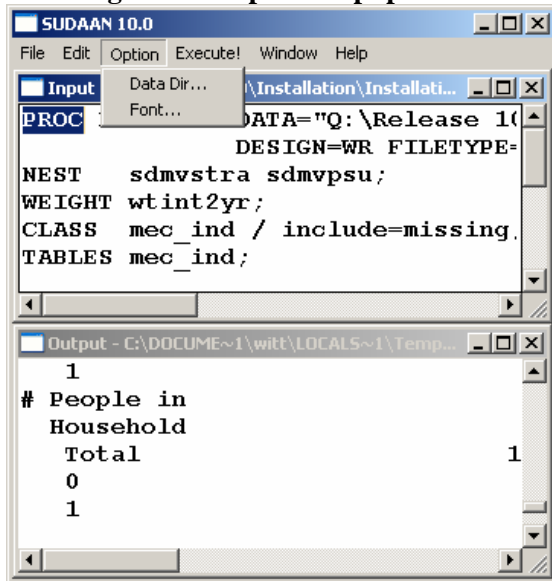
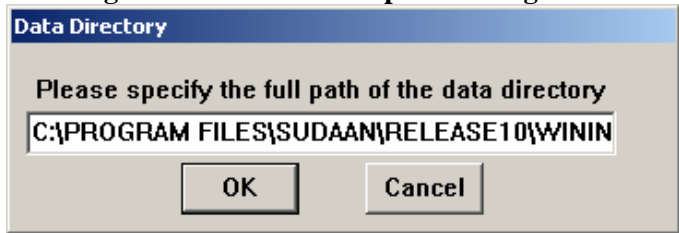


Figure 5.7: Data Dir... Option Dialog Box



You can set the Data Directory for your SUDAAN data files by selecting **DataDir...** from the **Option** menu. After selection, a dialog box will appear as depicted in **Figure 5.7**.

**NOTE:** If you don't specify a full path name in the *DATA=* option on the PROC statement of your SUDAAN program or in the *FILENAME=* option on the PRINT and OUTPUT statements, SUDAAN will assume the data is in the directory specified in **DataDir...** on the **Option** menu. The default Data Directory is the directory where the SUDAAN program is located.

Once you set this directory, SUDAAN saves it in a SUDAAN.INI file for future use. SUDAAN will continue to use this Data Directory for both interactive and batch mode until you change it. The SUDAAN.INI file in your Windows directory has several sections. *You should not attempt to modify this file.* The sections entitled [DATA DIRECTORY] and [FILE DIRECTORY] in SUDAAN.INI are used to store the currently selected values for these directories. *DataDir=* and *FileDir=* are reserved case sensitive keywords in SUDAAN.INI which you should never change. *DataDir* is used to keep track of your Data Directory settings. You should change the Data Directory setting only by choosing the **DataDir...** option from the **Option** menu. *FileDir* is used to initialize the current working directory for SUDAAN and should never be changed.

The **Font...** option is available from both Input and Output windows. Select **Font** from the **Option** Menu to specify the font type and font size for both viewing and printing. You can select different fonts for the Input and Output windows. The Courier or Courier New font is suggested for the Output window, since it is a monospaced font.

### 5.1.5 Execute Command

Click **Execute!** on the menu bar or press the **F3** key, to execute the program in the Input window. The results are displayed in the Output window. Use the cursor keys to navigate within the Output window.

Please note the following:

- If you don't clear the Output window following execution, the results from subsequent runs will be appended to it.
- SUDAAN saves all output from the current program in the file SUDAAN.OUT in the WSUDTEMP directory created in your local TEMP directory (by default, your local TEMP directory is located at C:\Documents and Settings\*user*\Local Settings\Temp\WSUDTEMP). In cases where no output appears in your Output window because of an error, check this file to determine the possible cause of problems.

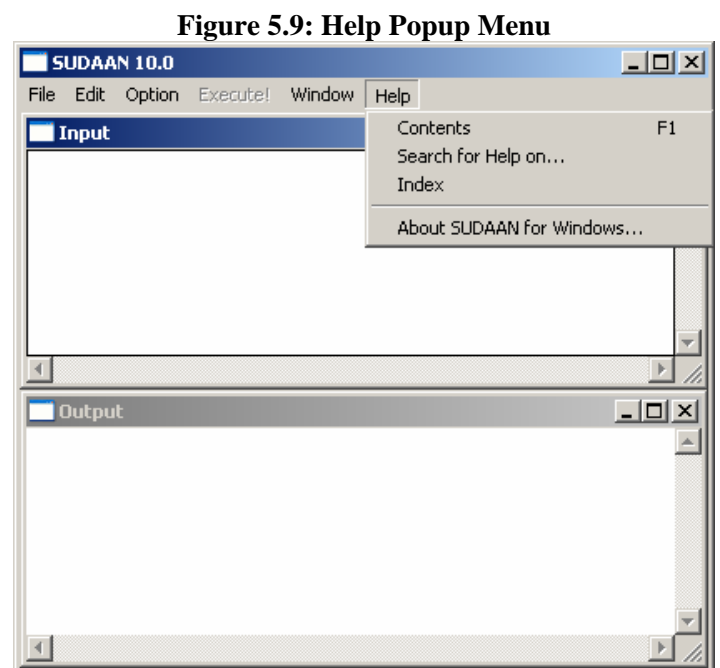
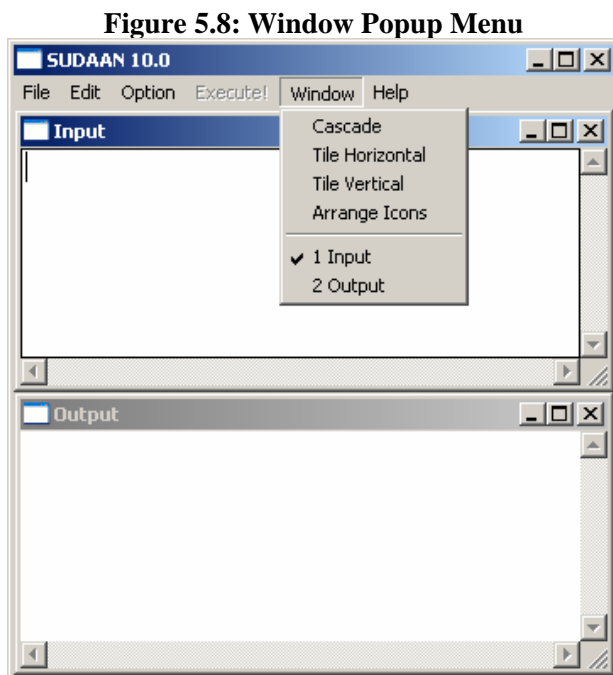
### 5.1.6 Window Menu Option

The **Window** menu option (Figure 5.8) provides utilities for **Cascade**, **Tile Horizontal** and **Tile Vertical**. The active window (either Input or Output) is checked. You can switch from Input window to Output window by selecting **Output** from the **Window** menu, and vice versa.

### 5.1.7 Help Menu Option

If you installed the CHM Help during setup, **Help** on the menu bar links to a complete online reference for all SUDAAN features and utilities. The **Help** menu has the following options (see Figure 5.9):

- **Contents: (F1)** links to the **Help** facility with **Contents** displayed in the left pane. SUDAAN Help is a compiled HTML (.CHM) file which can be accessed either from the **Help** menu on SUDAAN's main menu, or directly from the Windows Explorer.
- **Search for help on...:** Links to the **Help** facility with the Keyword Search dialog displayed in the left pane.

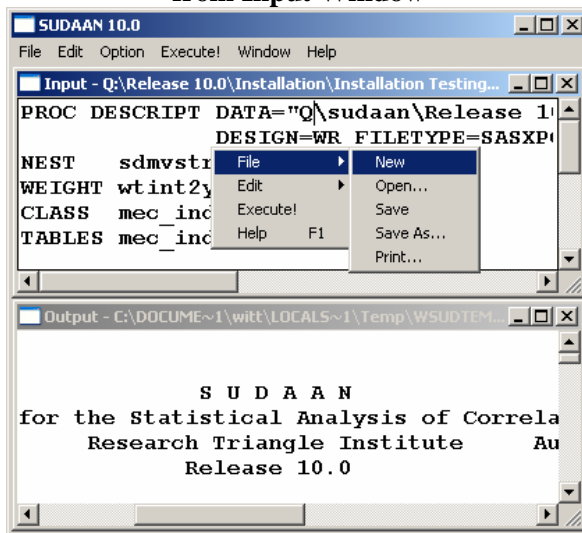


- **Index:** Links to the **Help** facility with the index tab displayed in the left pane.
- **About SUDAAN For Windows:** Displays the SUDAAN release number as well as your license information.

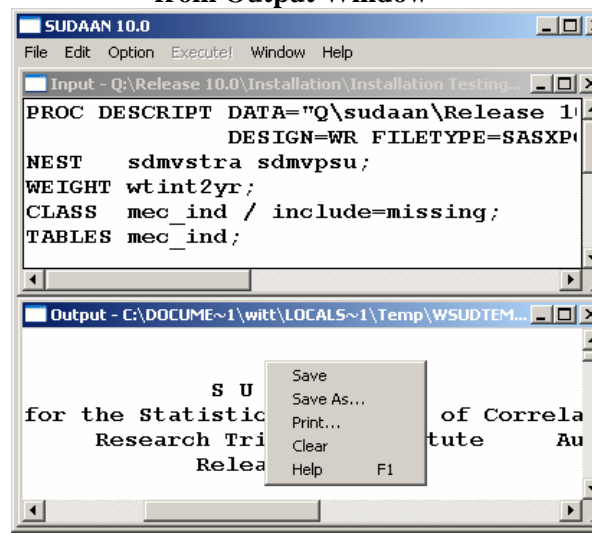
### 5.1.8 The Right Mouse Button Options

Click the right mouse button in either the input or output window and then select different options using the left mouse button. The options are a subset of those on the SUDAAN main menu. See **Figure 5.10** and **Figure 5.11** for an example.

**Figure 5.10: Right Mouse Menu from Input Window**



**Figure 5.11: Right Mouse Menu from Output Window**



## 5.2 How to Execute SUDAAN in Batch Mode

The complete command line syntax to run SUDAAN in batch mode is:

```
<path>WSUDAAN.EXE [infile] [outfile] [-r | -a]
```

where:

*path* is the complete path specification for the SUDAAN executable

*infile* is the complete file specification for the file containing your SUDAAN program. If this option is omitted, an interactive session of SUDAAN is launched

*outfile* is the name of the file where output should be directed. If this option is omitted, SUDAAN will direct output to a file with the same directory location and name as *infile*, but with extension

“.OUT”. If the *outfile* already exists, and no write option is specified, SUDAAN will display a dialog box to confirm that you want to overwrite the existing file.

-r | -a is the write option. The option *r* indicates that SUDAAN should *replace* or overwrite an existing file of the same name in the same location. The option *a* indicates that SUDAAN should *append* new output to an existing file of the same name in the same location.

If you don't specify the full path name of the input data file using the DATA= option on the SUDAAN procedure statement, SUDAAN will assume the data is in the *DataDir=* variable of the [DATA DIRECTORY] section of the SUDAAN.INI file. If the data is not in the specified directory, there will be an error message in the SUDAAN output file. When the SUDAAN batch job starts to run, the following message box will appear (**Figure 5.12**) then automatically disappear when the job is completed.

**Figure 5.12: SUDAAN Job is Running Message**



SUDAAN can be run in batch mode using the following methods:

1. Choose **Run** from the **Start** menu in Windows and type in the desired WSUDAAN.EXE command line.
2. Select **Command Prompt** from the **Start** menu in Windows (sometimes located under **All Programs** and then **Accessories**) and type in the desired WSUDAAN.EXE command line.
3. The WSUDAAN.EXE command line can be put in a typical .BAT file and executed accordingly.



## 6. INSTALLATION INSTRUCTIONS FOR SAS-CALLABLE INDIVIDUAL USER VERSION

### 6.1 System Requirements

<u>Category</u>	<u>Requirement</u>
Resources	8 MB of RAM (16 MB RAM suggested), 40 MB of hard disk
Operating System	Microsoft Windows 2000 or Windows XP
Software	SAS® 9 for Windows

### 6.2 Software Installation

During the installation process, select **SAS9-Callable Indiv. User** by clicking the appropriate check box to the left of this item in the left pane of the setup window when you reach the screen displayed in **Figure 1.1**.

By default, the following components will be installed. However you can deselect any of these components by clicking on the check boxes to the left of the component names which are displayed in the right pane of the setup window.

<u>Component</u>	<u>Description</u>
Program Files	Files required to execute SUDAAN procedures
HTML Help Files	SUDAAN online help, callable from SAS
CHM Help File	Compiled Help file. Note that the screens and material in the HTML and CHM Help are identical.
Language Manual	SUDAAN Language Manual in Adobe Acrobat PDF format
Example Manual	SUDAAN Example Manual in Adobe Acrobat PDF format

During the installation process, you will be asked to supply the directory location of your default SAS configuration file (SASV9.CFG). **SETUP** will display the correct path for you if SAS is installed in the default locations. If you are not sure where the SASV9.CFG is, or you want to override the default location, you can use the Browse option provided by **SETUP**, or you can search for the file in the Windows Explorer. If **SETUP** locates the file, it creates a backup copy, named SASV9.BK# before making changes in the SASV9.CFG file. **SETUP** makes the following changes to the file:

- If you have specified installation of HTML Help files, then **SETUP** inserts the following line at the beginning of the SASV9.CFG file. By default:

```
-HELPREGISTER 'SUDAAN Help' 'C:\Program Files\SUDAAN\Release10\HELP\sudaan.htm'
```

- **SETUP** inserts a line within the `-PATH` command at the end of the SASV9.CFG file pointing to the location of your SUDAAN program files. By default:

```
'C:\Program Files\SUDAAN\Release10\SAS9Ind'
```

**Note:** If the default SASV9.CFG contains only a –CONFIG command pointing to a complete SASV9.CFG file in another location, the install will update the second SASV9.CFG file.

**IMPORTANT:** SAS will not be able to find your SUDAAN.DLL and HTML Help files without these changes to your SASV9.CFG. If you have multiple SASV9.CFG files on your computer (both local and network drives), check to make sure that you have specified the **default** SAS configuration file within **SETUP** and that you manually update the remaining SASV9.CFG files you will be using with SUDAAN.

Following a default installation, the following subdirectories and files should be present (by default under C:\Program Files, or in the installation directory you have specified during setup)

- **SUDAAN\Release10**  
This subdirectory will contain SUDAAN’s license renewal software and README.1ST files.
- **SUDAAN\Release10\SAS9Ind**  
This subdirectory will contain all program and other required files.
- **SUDAAN\Release10\Help**  
This subdirectory will be present if you specify installation of either HTML or CHM Help during the installation process. Note that if you specify installation of CHM Help, then **SETUP** will create a shortcut to it in the SUDAAN folder on the **Start Programs** Menu.
- **SUDAAN\Release10\Manual**  
This subdirectory will be present if you specify installation of the SUDAAN Language Manual or the SUDAAN Example Manual. Note that **SETUP** will create shortcuts to these documents in the SUDAAN folder on the **Start Programs** Menu.

The **SETUP** program will install a SUDAAN folder on the **Start Programs** menu with shortcuts to the SUDAAN website, SUDAAN Language and Example Manuals, SUDAAN Help, and the SUDAAN Renewal program.

## 6.3 Running SUDAAN

You can run SUDAAN jobs in either SAS’s interactive mode or in batch mode. Execute SUDAAN procedures just like any other SAS procedures in either mode. **NOTE: Some SUDAAN syntax has been changed for this SAS-Callable version.** Please refer to the [SUDAAN Language Manual](#) for details. See the SAS User’s Manual for information on how to run SAS jobs.

## 7. INSTALLATION INSTRUCTIONS FOR SAS-CALLABLE NETWORK

All SAS-Callable, LAN versions of SUDAAN should be installed using a two-step process:

1. Install the Administrator version of SUDAAN SAS9-Callable from the CD as described in **Section 7.2**.
2. Each user wishing to use SUDAAN on the LAN must complete the LAN User Version installation as described in **Section 7.3**. All files needed for the LAN User Version installation will be installed during the LAN Administrator Version installation.

**IMPORTANT:** As indicated in the SUDAAN license agreement, the maximum number of simultaneous users who access SUDAAN on the network should not exceed the total number of users associated with your SUDAAN LAN license.

### 7.1 System Requirements

<u>Category</u>	<u>Requirement</u>
Resources	8 MB of RAM (16 MB RAM suggested), 40 MB of hard disk
Operating System	Microsoft Windows 2000 or Windows XP
Software	SAS® 9 for Windows

### 7.2 Software Installation–LAN Administrator

During the installation process, select **SAS9-Callable Network** by clicking the appropriate check box to the left of this item in the left pane of the setup window when you reach the screen displayed in **Figure 1.1**.

By default, the following components will be installed. However you can deselect any of these components by clicking on the check boxes to the left of the component names which are displayed in the right pane of the setup window.

<u>Component</u>	<u>Description</u>
Program Files	Files required to execute SUDAAN procedures
HTML Help Files	SUDAAN online help, callable from SAS
CHM Help File	Compiled Help file. Note that the screens and material in the HTML and CHM Help are identical.
NetUser Setup Files	<b>SETUP.EXE</b> and other files for network user install. (See <b>Section 7.3</b> )
Language Manual	SUDAAN Language Manual in Adobe Acrobat PDF format
Example Manual	SUDAAN Example Manual in Adobe Acrobat PDF format

During the installation process, you will be asked to supply the directory location of your default SAS configuration file (SASV9.CFG). **SETUP** will display the correct path for you if SAS is installed in the default location. If you are not sure where the file is, or you want to override the default location, you can

use the Browse option provided by **SETUP**, or you can search for the file in the Windows Explorer. If **SETUP** locates the file, it creates a backup copy, named SASV9.BK# before making changes in the SASV9.CFG file. **SETUP** makes the following changes to the file:

- If you have specified installation of HTML Help files, then **SETUP** inserts the following line at the beginning of the SASV9.CFG file. By default:

```
-HELPREGISTER 'SUDAAN Help' 'C:\Program Files\SUDAAN\Release10\HELP\sudaan.htm'
```

- **SETUP** inserts a line within the –PATH command at the end of the SASV9.CFG file pointing to the location of your SUDAAN program files. By default:

```
'C:\Program Files\SUDAAN\Release10\SAS9Net'
```

If the default SASV9.CFG contains only a –CONFIG command pointing to a complete SASV9.CFG file in another location, the install will update the second SASV9.CFG file.

**IMPORTANT:** SAS will not be able to find your SUDAAN .DLL and HTML Help files without these changes to your SASV9.CFG. If you have multiple SASV9.CFG files on your computer (both local and network drives), check to make sure that you have specified the **default** SAS configuration file within **SETUP** and that you manually update the remaining SASV9.CFG files you will be using with SUDAAN.

Following a default installation, the following subdirectories and files should be present (by default under C:\Program Files, or in the installation directory you have specified during setup)

- **SUDAAN\Release10**  
This subdirectory will contain SUDAAN's license renewal software and README.1ST files.
- **SUDAAN\Release10\SAS9Net**  
This subdirectory will contain all program and other required files.
- **SUDAAN\Release10\SAS9Net\NetUser**  
This subdirectory will contain the **SETUP** for all network users.
- **SUDAAN\Release10\Help**  
This subdirectory will be present if you specify installation of either HTML or CHM Help during the installation process. Note that if you specify installation of CHM Help, then **SETUP** will create a shortcut to it in the SUDAAN folder on the **Start Programs** Menu.
- **SUDAAN\Release10\Manual**  
This subdirectory will be present if you specify installation of the SUDAAN Language Manual or the SUDAAN Example Manual. Note that **SETUP** will create shortcuts to these documents in the SUDAAN folder on the **Start Programs** Menu.

The **SETUP** program will install a SUDAAN folder on the **Start Programs** menu with shortcuts to the SUDAAN website, SUDAAN Language and Example Manuals, SUDAAN Help, and the SUDAAN Renewal program.

## 7.3 Software Installation–LAN User

The **SETUP.EXE** program in the NetUser subdirectory of the SUDAAN\Release10\SAS9Net network directory is a program that will automatically setup SUDAAN for each user. This program should be run by each user. After **SETUP** has been run for each user, verify that the following steps have completed successfully.

### 1. The SASV9.CFG file – Verify Help

In order to use the SUDAAN interactive help system, the following line must appear at the beginning of the default SASV9.CFG file. (for example):

```
-HELPREGISTER 'SUDAAN Help' 'M:\SUDAAN\Release10\Help\SUDAANHelp.HTML'
```

where in this example the directory where SUDAAN files are located is M:\SUDAAN\Release10. If your network administrator has installed the HTML help files, then verify the presence of this line.

### 2. The SASV9.CFG file – Verify SUDAAN Path

Also verify that the network path to SUDAAN is inserted into the –PATH command in the default SASV9.CFG file. This tells SAS where to find SUDAAN procedures. For example, if SUDAAN is installed at M:\SUDAAN\Release10\SAS9Net, then the following line should be present:

```
M:\SUDAAN\Release10\SAS9Net
```

in the –PATH command. This command is usually located at the end of the SASV9.CFG file.

**Note:** If the default SASV9.CFG contains only a –CONFIG command pointing to a complete SASV9.CFG file in another location, the install will update the second SASV9.CFG file.

If a user changes their network drive letter associated with SUDAAN, or if the directory where SUDAAN is located changes, then the user will need to make the corresponding changes in their SASV9.CFG file.

## 7.4 Running SUDAAN

SUDAAN jobs can be run in either SAS's interactive mode or in batch mode. Execute SUDAAN procedures just like any other SAS procedures in either mode. **NOTE: Some SUDAAN syntax has been changed for this SAS-Callable version.** Please refer to the [SUDAAN Language Manual](#) for details. See the SAS User's Manual for information on how to run SAS jobs.

